

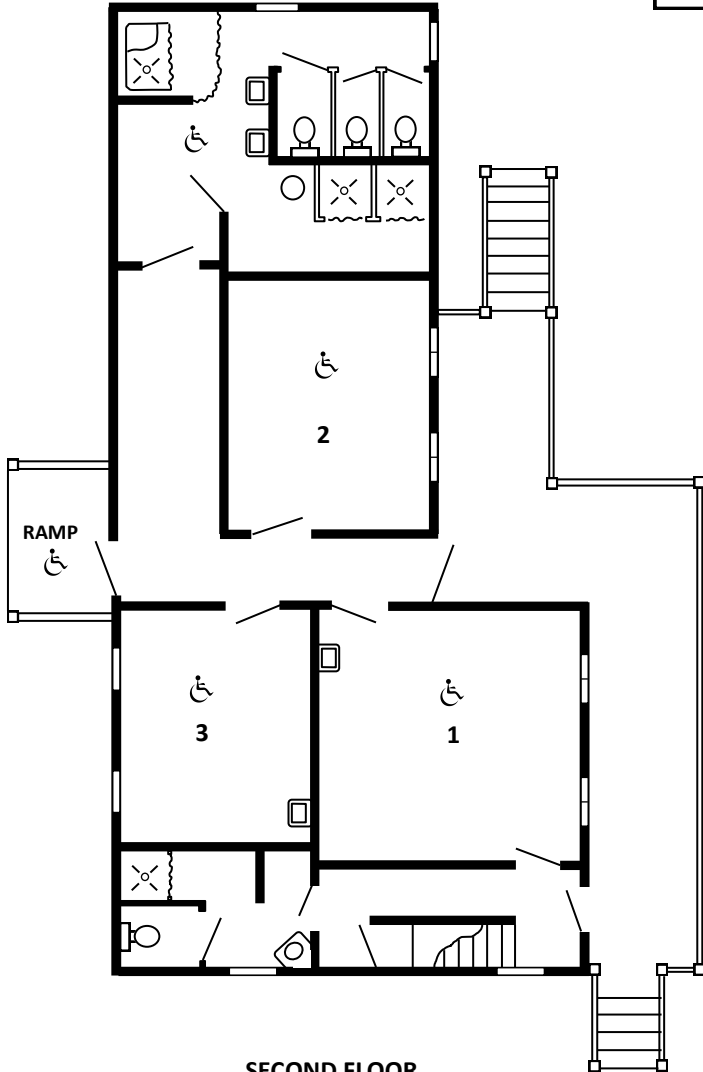
# Hemlock



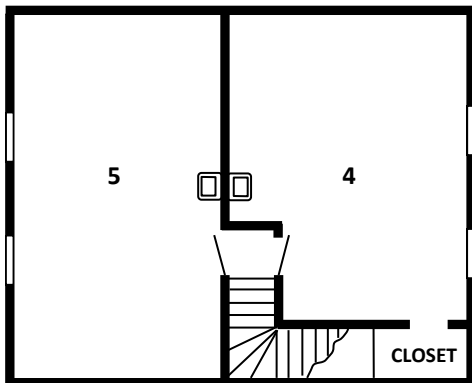
**Number of Beds: 16**  
**Sleeping Capacity: 17**

2 Shared Bathrooms  
 3 Handicap Accessible Rooms  
 Sinks in Rooms 1, 3, 4 and 5

## FIRST FLOOR



## SECOND FLOOR



Room	A - Adult Y - 12-16 C - 3-11	Part Time Format: Fri L Sat D	Bed	Name
1			T	
			T	
			T	
2			T	
			T	
			D	
3			T	
			T	
4			T	
			T	
			T	
			T	
5			T	
			T	
			T	
			T	

Beds: T = Twin D = Double Q = Queen