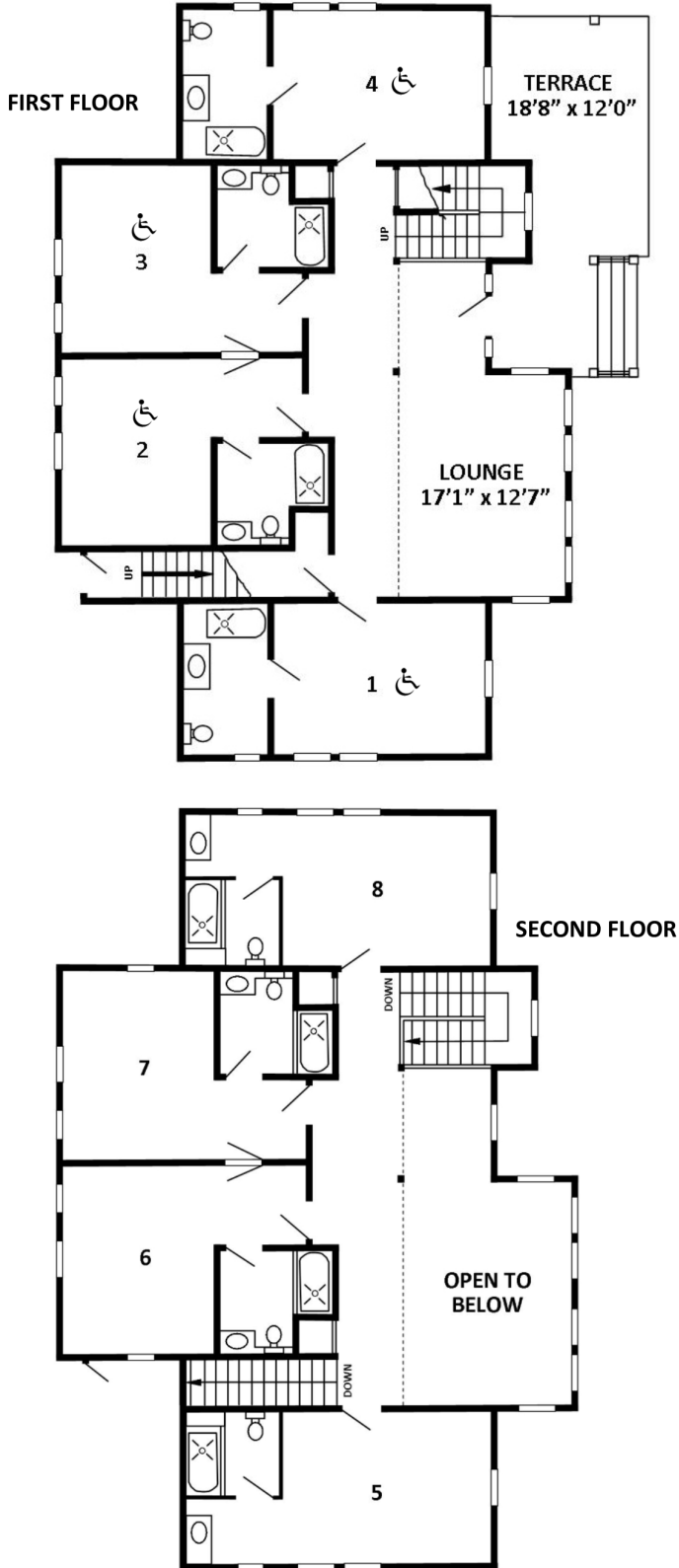




# Salal

**Number of Beds: 16**  
**Sleeping Capacity: 16**

All Rooms have Private Bathrooms  
 Rooms 1-4 are Wheelchair Accessible



Room	A - Adult Y - 12-16 C - 3-11	Part Time PT	Bed	Name
1 ♿			T	
			T	
2 ♿			T	
			T	
3 ♿			T	
			T	
4 ♿			T	
			T	
5			T	
			T	
6			T	
			T	
7			T	
			T	
8			T	
			T	

Beds: T = Twin D = Double Q = Queen